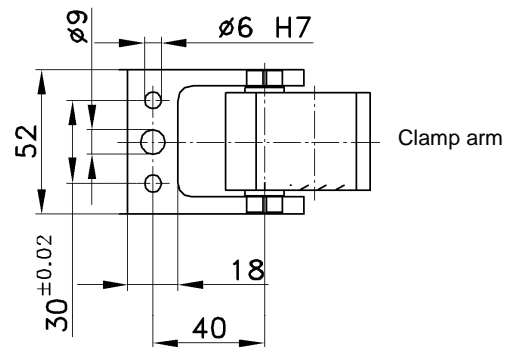
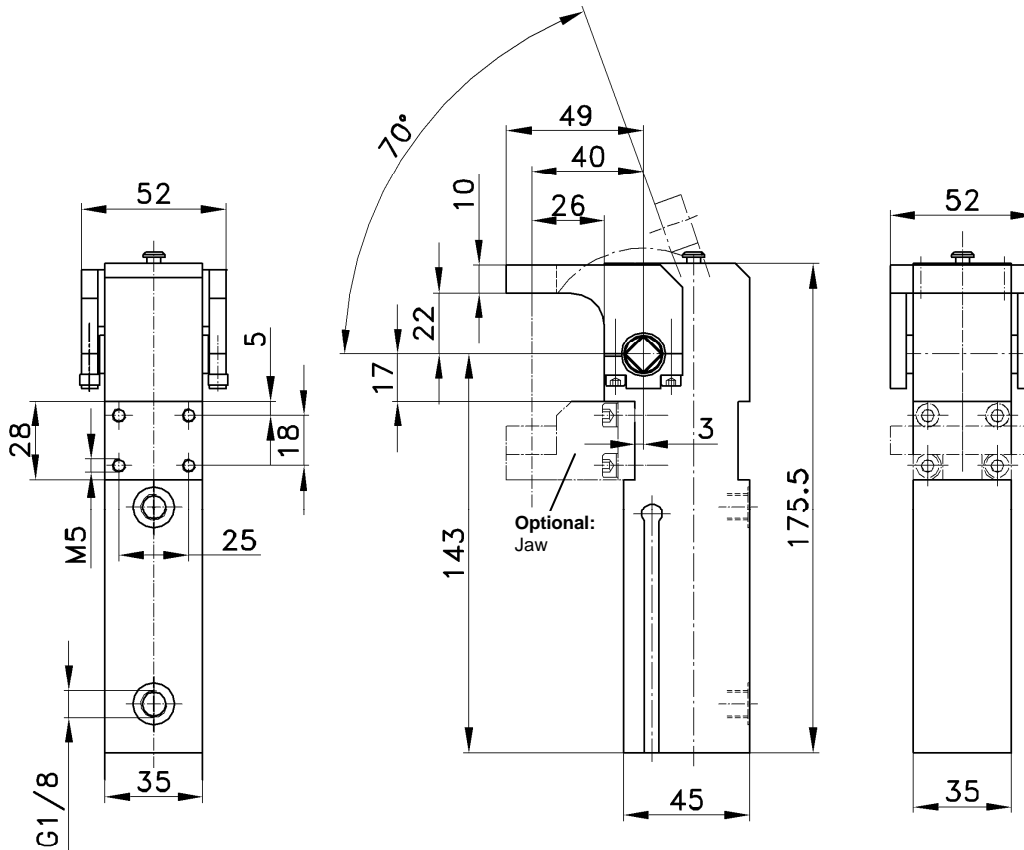


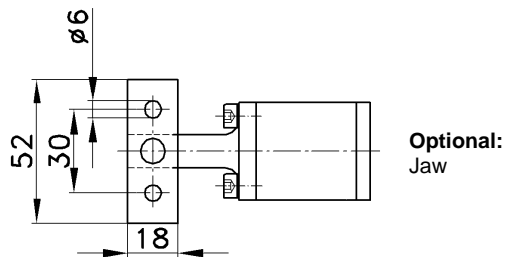
Flange clamp

Toggle-locked end position, optional adjustment function

AFS 25



Clamp arm



Optional: Jaw

Order example:

AFS 25 N A30 T03 70°

AFS: Type
 25: Piston Ø
 N: Option: Adjustment function
 A30: With clamp arm
 T03: Sensing system
 70°: Opening angle

Order key for Tünkers sensing systems:

... T00 Without sensing
 ... T03 Magnetic sensing, prepared for sensing system

Option:

Magnetic switch type "AFS T03" (2 pcs., article no. 221918) must be ordered separately; does not form part of the delivery scope.

Clamp arm versions:

A00: Without clamp arm
 A30: With clamp arm
 A31: With clamp arm and jaw

Opening angle:

Available up to max. 70°; other versions upon request!

*Tolerance of stud boreholes: ± 0.02, of threaded borings: ± 0.1.

Type	Holding force (N)	Clamping force (N)	Weight (kg)
AFS 25	1500	500	1.0