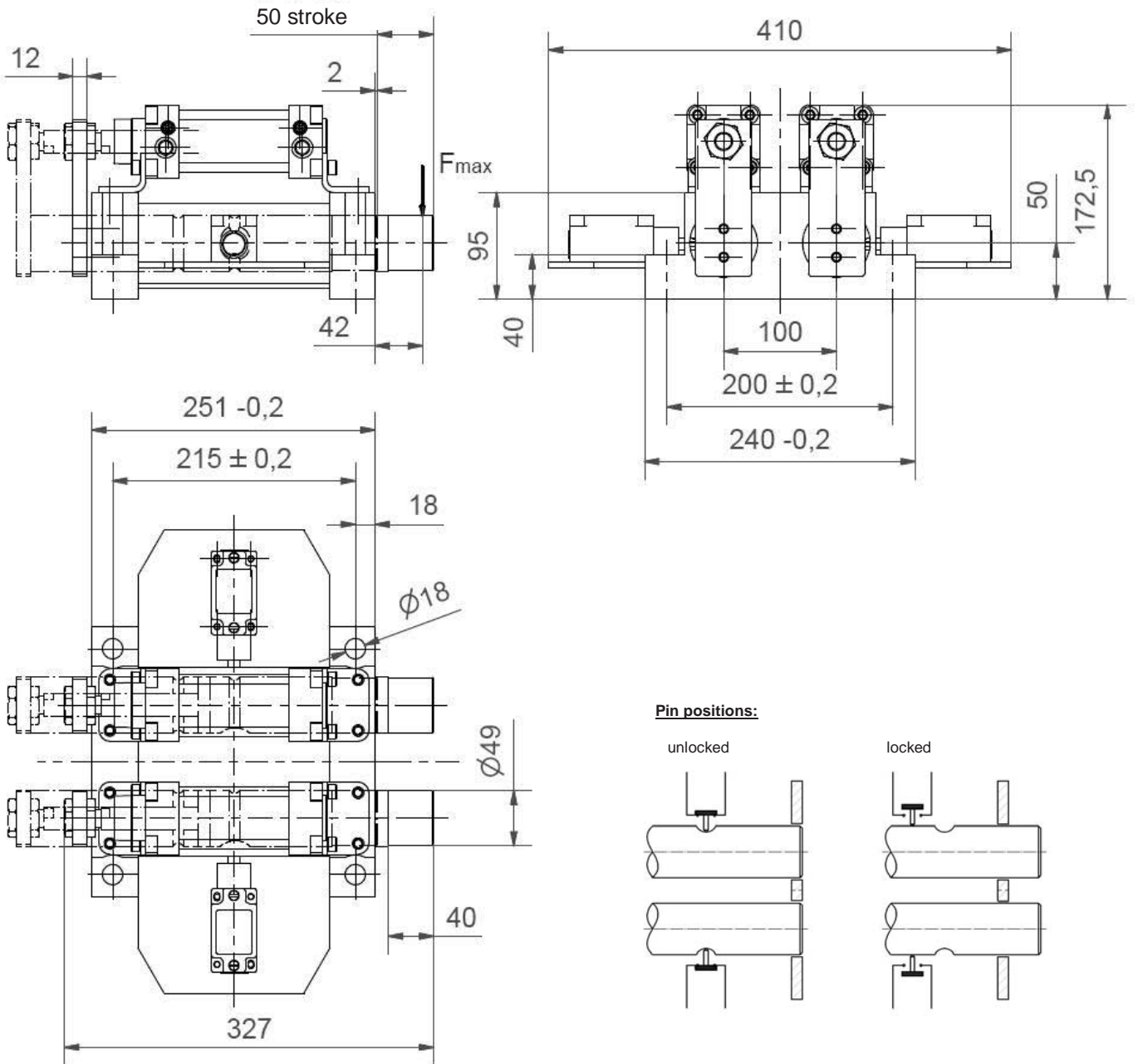


Shot pin

Tandem design, pneumatic operated

SAND 80



Ordering example:

SAND 80-50/50 T12

SAND 80 : Type
 50: Pin ϕ
 50: Stroke
 T12: Sensing system

Attention:

- Do not operate under load.
- End position control via safety switch with roller plunger AEG GTg 13 NEL with LED
- Stepless adjustable switch position.
- max. load capacity (static): $F_{max} = 22 \text{ kN}$

Medium: Air, max. 6 bar. operation permitted with oil-free air.

Ordering example Tünkers sensing systems:

...T01S Safety switch with roller plunger
 ...T12 Inductive sensor 24 V, 1 output with integrated LED's