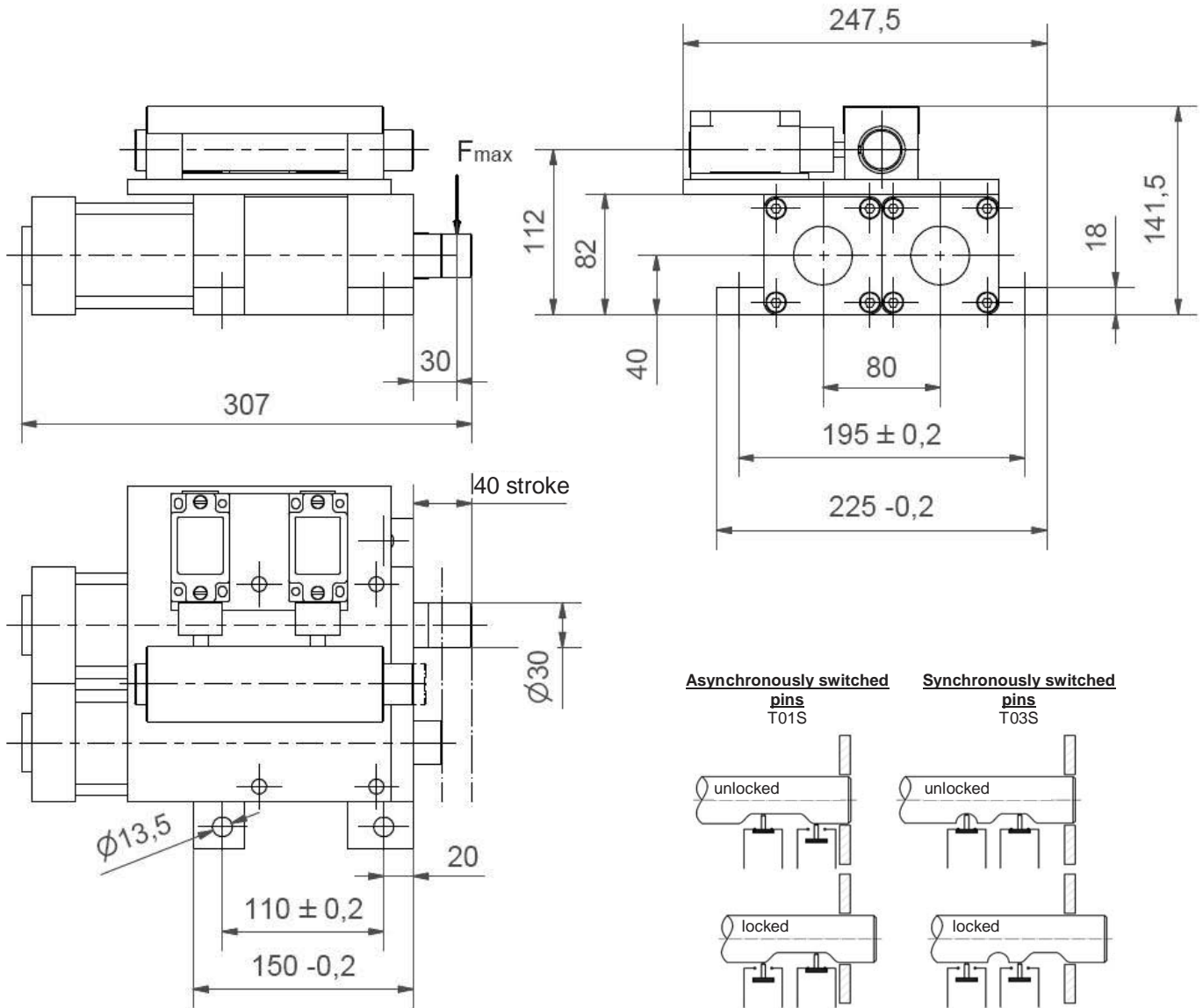


# Shot pin

Tandem design, pneumatic operated

# SAND 50



### Ordering example:

SAND 50-30/40 T12

SAND 50 :           Type  
 30:                Pin Ø  
 40:                Stroke  
 T12:              Sensing system

### Ordering example Tünkers sensing systems:

...T01S           Safety switch with roller plunger (asynchronously switched)  
 ...T03S           Safety switch with roller plunger (synchronously switched)  
 ...T12           Inductive sensor 24 V, 1 output  
                   with integrated LED's

### Attention:

- Do not operate under load!
- End position control via safety switch with roller plunger AEG GTg 13 NEL with LED
- Stepless adjustable switch position.
- max. load capacity (static):  $F_{max} = 4,5 \text{ kN}$

Medium: Air, max. 6 bar, operation permitted with oil-free air.